

Masonry mortars and grouts

Overview of technical data sheets

DIVISION
4

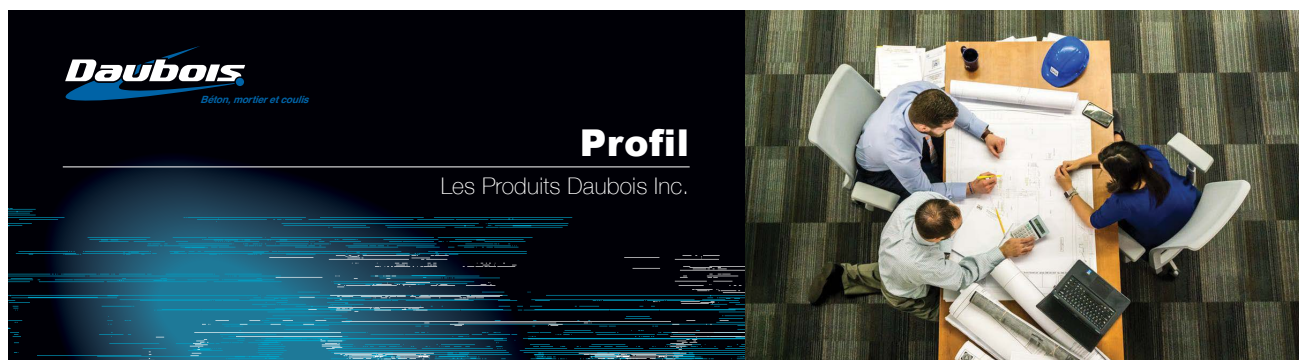
Daubois™

TARGET®
a **QUIKRETE®** company

COMMERCIAL GRADE
QUIKRETE®
CEMENT & CONCRETE PRODUCTS™



PARTNER of your achievements since 1960



Since 1960, Les Produits Daubois Inc. has been working in the field of concrete, mortar and masonry grout. Our experience has allowed us to become the leader in Quebec for everything related to major installation, reinforcement and restoration of masonry elements.

Via its Masonry division, Les Produits Daubois Inc. provides its expertise to the various stakeholders in new construction as well as the repair of concrete structures. In collaboration with Target Products Ltd., its sister division in Western Canada, Produits Daubois Inc. brings together the expertise having worked on projects and construction sites across North America. This association results in a wide range of specialized cementitious products and a proven technical service.

Les Produits Daubois Inc. offers numerous specialized construction products meeting distinct technical specifications for each project. From self-consolidating concrete to post-tensioning grouts, including structural concrete and specialized mortars, Les Produits Daubois Inc. is proud to be your partner in your construction and restoration projects.



Laying mortar

Daubois™ Bétomix® Plus Mortar for laying masonry elements

- For the installation (grouting) of masonry elements.
- Contributes as part of LEED® certification.
- Available in type N, type O and type S.
- Available in 30 kg (66 lb) bags and 1500 kg (3307 lb) superbags.

Characteristic (Type O)

Water vapour transmission: 20 perms
 $f'c$ @ 28 days: 2.5 MPa (362 PSI)
 Pull-off adhesion on clay brick 28 days: 0.32 MPa (36 PSI)
 Air content: 10 to 12%
 Freeze/thaw resistance 28 days: 25 cycles
 Flexural strength 28 days: 1.3 MPa (189 PSI)

Characteristic (Type N)

Water vapour transmission: 20 perms
 $f'c$ @ 28 days: 5.0 MPa (725 PSI)
 Pull-off adhesion on clay brick 28 days: 0.40 MPa (58 PSI)
 Air content: 10 to 12%
 Freeze/thaw resistance 28 days: 50 cycles
 Flexural strength 28 days: 1.7 MPa (247 PSI)

Characteristic (Type S)

Water vapour transmission: 14 perms
 $f'c$ @ 28 days: 12.5 MPa (1813 PSI)
 Pull-off adhesion on clay brick 28 days: 0.50 MPa (73 PSI)
 Air content: 10 to 12%
 Freeze/thaw resistance 28 days: > 100 cycles
 Flexural strength 28 days: 2.9 MPa (421 PSI)

Note: As described in Table 6 of standard CSA A179-04, the compressive strength value of a mortar prepared on site corresponds to approximately two-thirds of the compressive strength obtained for the same mortar prepared in the laboratory.



Daubois™ Econo PS Mortar for laying masonry elements

- For the installation (grouting) of masonry elements.
- Type N mortar based on masonry cement.
- For indoor and outdoor use.
- Available in 30 kg (66 lb) bags and 1500 kg (3307 lb) superbags.

Characteristic (Type N)

$f'c$ @ 28 days: 5.0 MPa (725 PSI)
 Air content: Maximum 18%

Econo PS mortar is formulated to meet the specifications prescribed in Table 6 of the CSA A179-14 standard for a type N mortar.



Daubois™ Blocmix Setting mortar for concrete blocks

- For the installation (grouting) of concrete blocks (interior).
- Available in 15, 20, 25 or 30 MPa.
- Contributes as part of LEED® certification.
- Available in 30 kg (66 lb) bags and 1500 kg (3307 lb) superbags.

Characteristic (15 MPa)

Water vapour transmission: 12 perms
 $f'c$ @ 28 days: 15.0 MPa (2175 PSI)
 Pull-off adhesion 28 days: 1.16 MPa (168 PSI)
 Freeze/thaw resistance 28 days: > 100 cycles
 Flexural strength 28 days: 4.5 MPa (653 PSI)

Characteristic (20 MPa)

Water vapour transmission: 9 perms
 $f'c$ @ 28 days: 20.0 MPa (2901 PSI)
 Pull-off adhesion 28 days: 1.31 MPa (190 PSI)
 Freeze/thaw resistance 28 days: > 150 cycles
 Flexural strength 28 days: 5.3 MPa (769 PSI)

Characteristic (25 MPa)

Water vapour transmission: 11 perms
 $f'c$ @ 28 days: 25.0 MPa (3626 PSI)
 Pull-off adhesion 28 days: 1.64 MPa (238 PSI)
 Freeze/thaw resistance 28 days: > 150 cycles
 Flexural strength 28 days: 5.4 MPa (783 PSI)

Characteristic (30 MPa)

Water vapour transmission: 11 perms
 $f'c$ @ 28 days: 30.0 MPa (4350 PSI)
 Pull-off adhesion 28 days: 1.64 MPa (238 PSI)
 Freeze/thaw resistance 28 days: > 150 cycles
 Flexural strength 28 days: 5.4 MPa (783 PSI)

Blocmix 15 MPa is formulated to meet the properties prescribed in Table 6 of the CSA A179-04 standard for a type S mortar.

Blocmix 20 MPa and 25 MPa are formulated to meet the properties prescribed in Table A.3 of standard CSA A179-04 for a type M mortar.



Daubois™ XhN-101 Hydraulic lime-based laying mortar

- Composition compatible with historical mortars.
- Excellent vapor transmission and sealing.
- Low shrinkage. Resistance to salts (chipping).
- This product is packaged in a 22.7 kg (50 lb) paper bag.

Characteristic

Water vapour transmission: 19 perms
 $f'c$ @ 28 days: 3.5 MPa (508 PSI)
 Pull-off adhesion 28 days: 0.4 MPa (62 PSI)
 Freeze/thaw resistance 28 days: 40 cycles
 Flexural strength 28 days: 2.6 MPa (377 PSI)



Setting mortar (continued)

Daubois™ Type N 1-2-6 Coarse Mortar

Lime and cement-based mortar

- Formulated for the installation (grouting) of masonry elements.
- Contains an air entraining agent.
- For indoor or outdoor use.
- Meets the specifications of CSA A179-14.



Characteristics

Vapor transmission: 23 perm

$f'c$ @ 28 days: 5 MPa (725 PSI)

Pull-off adhesion 28 days: 0.80 MPa (116 PSI)

Flexural strength 28 days: 2.0 MPa (290 PSI)

Masonry grout

Daubois™ BlocFiller

Fine grain grout for concrete block cavities

- Used as a reinforcing and consolidating grout.
- Contributes as part of LEED® certification.
- Formulated to meet the CSA A179-14 standard.
- Available in 30 kg (66 lb) bags and 1500 kg (3307 lb) superbags.



Characteristic (15 MPa)

Slump: 250 to 280 mm

$f'c$ @ 28 days: 15.0 MPa (2175 PSI)

Pull-off adhesion 28 days: 1.05 MPa (152 PSI)

Drying shrinkage 28 days: 0.13%

Flexural strength 28 days: 4.0 MPa (580 PSI)

Characteristic (20 MPa)

Slump: 250 to 280 mm

$f'c$ @ 28 days: 20.0 MPa (2901 PSI)

Pull-off adhesion 28 days: 1.6 MPa (232 PSI)

Drying shrinkage 28 days: 0.15%

Flexural strength 28 days: 4.2 MPa (609 PSI)

Characteristic (25 MPa)

Slump: 250 to 280 mm

$f'c$ @ 28 days: 25.0 MPa (3626 PSI)

Pull-off adhesion 28 days: 1.4 MPa (203 PSI)

Drying shrinkage 28 days: 0.15%

Flexural strength 28 days: 4.6 MPa (667 PSI)

Characteristic (30 MPa)

Slump: 250 to 280 mm

$f'c$ @ 28 days: 30.0 MPa (4350 PSI)

Pull-off adhesion 28 days: 1.7 MPa (247 PSI)

Drying shrinkage 28 days: 0.14%

Flexural strength 28 days: 5.5 MPa (798 PSI)

The pull-off adhesion tests are carried out on concrete blocks and comply with the CSA 23.2-6B standard.

Daubois™ EconoFill

Fine grain grout for concrete block cavities

- Used as a reinforcing and consolidating grout.
- Contributes as part of LEED® certification.
- Formulated to meet the CSA A179-14 standard.
- Available in 30 kg (66 lb) bags and 1500 kg (3307 lb) superbags.



Characteristic (20 MPa)

Slump: 250 to 280 mm

$f'c$ @ 28 days: 20.0 MPa (2901 PSI)

Pull-off adhesion on concrete block 28 days: 1.11 MPa (160 PSI)

Air content: < 3%

Drying shrinkage 28 days: 0.11%

Flexural strength 28 days: 3.5 MPa (508 PSI)

Daubois™ EconoFill GG

Coarse-grained grout for concrete block cavities

- Formulated to meet CSA A179-14 standard.
- Used for filling cavities or cells whose smallest horizontal dimension is equal to or greater than 50 mm.
- Generates less waste than a fine-grained grout.
- Contributes as part of LEED® certification.
- Available in 30 kg (66 lb) bags and 1500 kg (3307 lb) super bags.



Characteristic (20 MPa)

Slump: 250 to 280 mm

$f'c$ @ 28 days: 20.0 MPa (2901 PSI)

Pull-off adhesion on concrete block 28 days: 2.96 MPa (290 PSI)

Air content: < 3%

Drying shrinkage 28 days: 0.04%

Flexural strength 28 days: 6.2 MPa (899 PSI)

Repointing mortar

Daubois™ Restomix® Lime-based repointing mortar

- Appropriate texture for optimal application.
- Excellent vapor transmission.
- Low water absorption.
- Excellent adhesion.
- This product is packaged in a 22.7 kg (50 lb) paper bag.



Characteristic

Water vapour transmission: 24 perms	Air content: 8% to 12% (Maximum 18%)
$f'c$ @ 28 days: 2.5 MPa (363 PSI)	Freeze/thaw resistance 28 days: > 25 cycles
Pull-off adhesion on clay brick 28 days: 0.43 MPa (62 PSI)	Drying shrinkage 91 days: 0.13%
Water absorption 24 hours: 104 g / 100 cm ²	Flexural strength 28 days: 1.2 MPa (174 PSI)

Daubois™ XhN-60 Lime-based repointing mortar

- Compatible with historic mortars.
- Excellent vapor transmission and sealing.
- Freeze/thaw resistance greater than average mortars.
- Resistance to salts (chipping).
- This product is packaged in a 22.7 kg (50 lb) paper bag.



Characteristic

Water vapour transmission: 24 perms	Water absorption 24 hours: 125 g / 100 cm ²
$f'c$ @ 28 days: 3.0 MPa (435 PSI)	Freeze/thaw resistance 28 days: > 60 cycles
Pull-off adhesion on clay brick 28 days: 0.21 MPa (30 PSI)	Drying shrinkage 90 days: 0.10%
Water retention: min. 70% of the initial spread	Flexural strength 28 days: 1.2 MPa (174 PSI)

Daubois™ Mortar 1-2-6 Coarse Repointing mortar based on lime and cement

- For indoor or outdoor use.
- Specially formulated for the restoration of historic buildings.
- Possibility of developing custom colors.
- This product is packaged in a 30 kg (66 lb) paper bag.

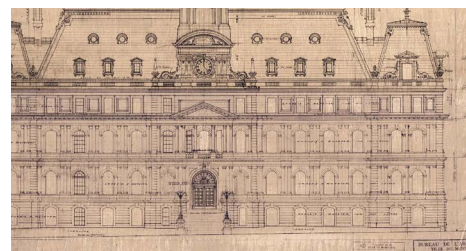


Characteristic

$f'c$ @ 28 days: min. 5.0 MPa (725 PSI)	Water absorption 24 hours: 99 g / 100 cm ²
Pull-off adhesion 28 days: 0.59 MPa (62 PSI)	Drying shrinkage 90 days: 0.13%
Air content: 8% to 12% (Maximum 18%)	Flexural strength 28 days: 1.56 MPa (145 PSI)

Daubois™ Mortar 1-2.5-8 Coarse Repointing mortar based on lime and cement

- For indoor or outdoor use.
- Specially formulated for the restoration of historic buildings.
- Possibility of developing custom colors.
- This product is packaged in a 30 kg (66 lb) paper bag.



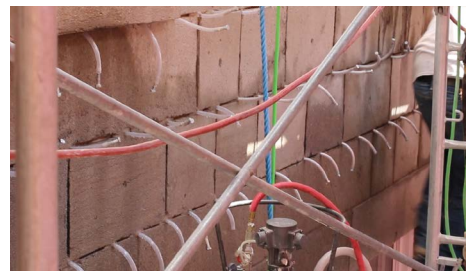
Characteristic

$f'c$ @ 28 days: min. 2.4 MPa (290 PSI)	Water absorption 24 hours: 101 g / 100 cm ²
Pull-off adhesion 28 days: 0.40 MPa (62 PSI)	Drying shrinkage 90 days: 0.13%
Air content: 8% to 12% (Maximum 18%)	Flexural strength 28 days: 0.8 MPa (101 PSI)

Injection grout

Daubois™ Grout B-1015 Injection grout thixotropic based on hydraulic lime

- Composition compatible with historical mortars.
- Excellent penetrating power.
- High fluidity without bleeding or segregation.
- Very good adhesion.
- Excellent vapor transmission.
- This product is packaged in a 20 kg (44 lb) paper bag.



Characteristic

Water vapour transmission: 30 perms

$f'c$ @ 28 days: 3.5 MPa (508 PSI)

Pull-off adhesion 28 days: 0.30 MPa (44 PSI)

Water absorption 24 hours: 242 g / 100 cm²

Drying shrinkage 91 days: 0.27%

Outflow: 30 seconds

Note: These results may vary from one sample to another and are an indicator of grout performance. They cannot be used for acceptance or rejection of use of the product.

Daubois™ Grout F-20 Hydraulic lime-based injection grout

- Composition compatible with historical mortars.
- Excellent penetrating power.
- High fluidity without bleeding or segregation.
- Very good adhesion.
- This product is packaged in a 20 kg (44 lb) paper bag.



Characteristic

Water vapour transmission: 30 perms

$f'c$ @ 28 days: 3.5 MPa (508 PSI)

Pull-off adhesion 28 days: 0.30 MPa (44 PSI)

Water absorption 24 hours: 242 g / 100 cm²

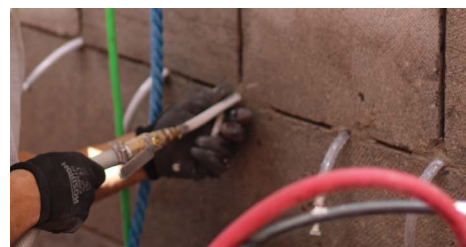
Drying shrinkage 91 days: 0.27%

Outflow: 15 - 20 seconds

Note: These results may vary from one sample to another and are an indicator of grout performance. They cannot be used for acceptance or rejection of use of the product.

Daubois™ Grout FX-20 Hydraulic lime-based injection grout

- Composition compatible with historical mortars.
- Excellent penetrating power.
- High fluidity without bleeding or segregation.
- Very good adhesion.
- This product is packaged in a 20 kg (44 lb) paper bag.



Characteristic

Water vapour transmission: 30 perms

$f'c$ @ 28 days: 6.5 MPa (943 PSI)

Pull-off adhesion 28 days: 0.48 MPa (70 PSI)

Water absorption 24 hours: 221 g / 100 cm²

Drying shrinkage 91 days: 0.27%

Outflow: 15 - 20 seconds

Note: These results may vary from one sample to another and are an indicator of grout performance. They cannot be used for acceptance or rejection of use of the product.

Repair mortar

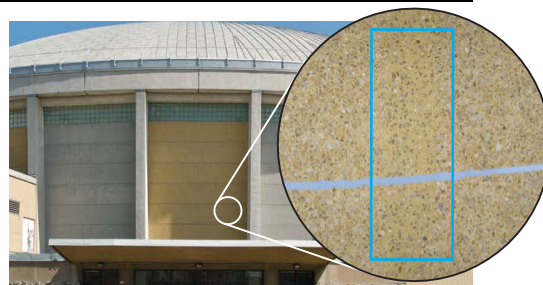
Daubois™ Neogranit Granite repair mortar

- Properties compatible with a hard stone like granite.
- Can be affixed to a concrete or artificial stone surface.
- Adheres very well to the elements, without adding polymer.
- Low absorption rate. High resistance to salts (chipping).
- Quick setting. Can be carved.
- This product is available in a 20 kg (44 lb) pail.

Characteristic

Final setting time: 35 minutes
Water vapour transmission: 4 perms
 $f'c$ @ 28 days: 45.0 MPa (6525 PSI)
Pull-off adhesion on granite 28 days: 0.39 MPa (57 PSI)
Freeze/thaw resistance 28 days: > 50 cycles
Drying shrinkage 91 days: 0.19%
Flexural strength 28 days: 10.0 MPa (1450 PSI)

Note: In order to adjust the coloring, different aggregates must be used to match the stone.



IMPORTANT: The sale and installation of this product requires a certified applicator.

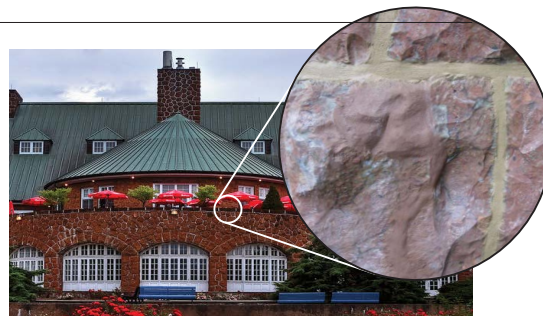
Daubois™ Neostone C35 Restoration mortar for stone

- Properties compatible with stone, does not contain any polymer.
- Excellent vapor transmission and sealing.
- Good resistance to freeze/thaw cycles.
- Excellent adhesion.
- Low shrinkage.
- This product is available in a 20 kg (44 lb) pail.

Characteristic

Final setting time: 3 1/2 hours
Water vapour transmission: 20 perms
 $f'c$ @ 28 days: 15.0 MPa (2175 PSI)
Pull-off adhesion on limestone 28 days: 0.32 MPa (46 PSI)
Freeze/thaw resistance 28 days: > 25 cycles
Drying shrinkage 91 days: 0.06%
Flexural strength 28 days: 3.0 MPa (435 PSI)

Note: Factory coloring on request.



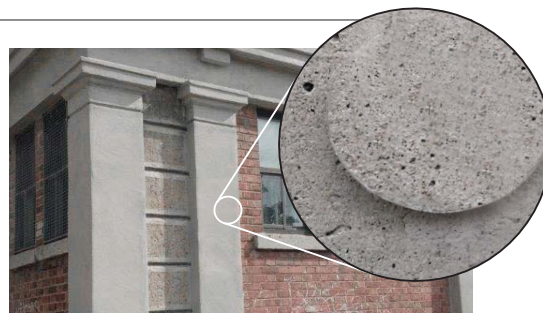
IMPORTANT: The sale and installation of this product requires a certified applicator.

Daubois™ Fortatop Type R Fast Curing Thixotropic Repair Mortar

- Modified with polymers.
- Includes microfibers reducing the risk of cracking.
- Excellent durability.
- Allows structural repair.
- Horizontal, vertical and overhanging walls (thixotropic).
- Available in 3 kg bucket, 15 kg pail and 20 kg bag.

Characteristic

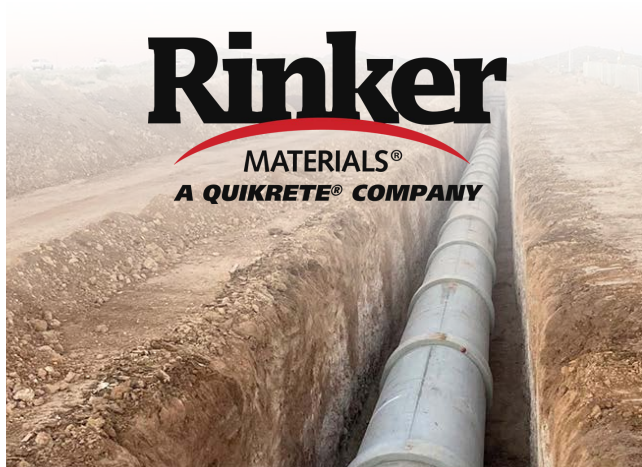
Handling: 15 - 20 minutes
 $f'c$ @ 24 hours: > 22.0 MPa (3190 PSI); $f'c$ @ 28 days: 45.0 MPa (6527 PSI)
Air content: 8.0%
Pull-off adhesion 28 days: 2.2 MPa (319 PSI)
Spalling loss 49 cycles: 0.02 kg/m² (0.47 lb/ft²)
Oblique shear adhesion 28 days: 21.4 MPa (3104 PSI)
Durability factor for freeze and thaw cycles (300 cycles): 97.7



*Included in the list of materials
tested by the MTQ
– Type R repair mortar*



On construction sites throughout North America



Daubois™
une filiale de **QUIKRETE®**

www.daubois.com

1 (800) 561-2664

6155, boul. des Grandes-Prairies, St-Léonard (Qc) H1P 1A5