

**Grout, mortar and concrete**  
Overview of technical data sheets

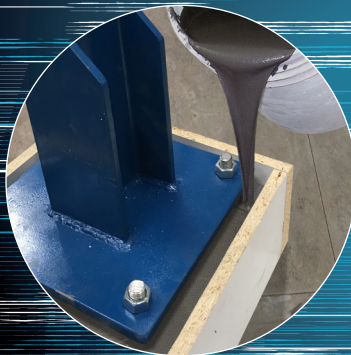
DIVISION  
**3**

**Daubois™**



a **QUIKRETE®** company

COMMERCIAL GRADE  
**QUIKRETE®**  
CEMENT & CONCRETE PRODUCTS™





For more than 60 years, Daubois Products Inc. has been involved in premixed concrete and mortar. Our experience in the field of masonry has allowed the company to become the leader in Quebec for everything related to the installation, strengthening and restoration of masonry elements on major jobsites.

Through its Construction Division, Daubois Products Inc. provides its expertise to various actors in construction projects as well as the repair of concrete structures. In collaboration with Target Products Ltd., its sister division in Western Canada, Daubois Products Inc. brings together expertise having worked on projects and construction sites throughout North America.

Daubois Products Inc. offers a variety of specialized construction products meeting distinct technical specifications for each projects. From self-consolidating concrete to post-tensioning grouts, as well as structural concrete for emergency repairs, Daubois Products Inc. is proud to be your partner in your construction projects.



## Structural and Anchoring Grout

### Target® 1110 Expanding Grout (PEG) Target® 11103 High Early Strength Expanding Grout (PEG-HE)

- Expanding structural grout (columns, base plates, machinery and bearing pads)
- Optimum load transfert
- Structural repair concrete
- Below, above or at ground level
- Indoor and outdoor

#### Characteristics (PEG)

Flow: 20 - 30 seconds  
 $f'c$  @ 24 hours: 9.7 MPa (1410 Psi)  
 $f'c$  @ 28 days: 48.8 MPa (7080 Psi)  
 Maximum thickness: 150 mm (6 inches)  
 Curing: 24 hours

#### Characteristics (PEG-HE)

Flow: 25 - 35 seconds  
 $f'c$  @ 24 hours: 26.0 MPa (3770 Psi)  
 $f'c$  @ 28 days: 45.0 MPa (6530 Psi)  
 Maximum thickness: 150 mm (6 inches)  
 Curing: 24 hours



*Included in the list of materials  
 approved by the MTQ  
 - General purpose grout and anchoring grout*

### Target® 1125 Fondu Expanding Grout (FEG) Cold Weather

- Grout for low temperature work
- Permanently anchoring for highway furnitures, such as posts, signs and parking meters
- Permanently fixing anchor bolts, columns, railing and other fixtures in concrete, rock or masonry

#### Characteristics (FEG)

Flow: 20 - 30 seconds  
 Rheological stability: Without bleeding and without segregation  
 $f'c$  @ 24 hours: 18.6 MPa (2700 Psi)  
 Maximum thickness: 75 mm (3 inches)

*Typical results at temperatures between -10 °C and 3 °C (14 °F and 37 °F) - Preconditioned mixing water at 50 °C (122 °F)*



### Target® 1117 Anchor Grout

- Soil tie back anchor grouting
- Grouting of fissures and cracks in rocks
- Anchor bolt grouting
- Thixotropic / Inhibits washout
- High early strength

#### Characteristics

Flow: 20 - 30 seconds  
 Rheological stability: Without bleeding and without segregation  
 $f'c$  @ 24 hours: 31.7 MPa (4600 Psi) -  $f'c$  @ 28 days: 82.7 MPa (12000 Psi)  
 Maximum thickness: 50 mm (2 inches)



*Included in the list of materials  
 approved by the MTQ  
 - General purpose grout and anchoring grout*

### Target® 1118 Unsanded Silica Fume Grout

- Expanding grout for rock anchoring
- Grouting of fissures and cracks in rocks
- Inhibits washout
- Fluid phase expansion
- Post-tensioning grout

#### Characteristics

Flow: 20 - 30 seconds  
 Rheological stability: Without bleeding and without segregation  
 $f'c$  @ 28 days: 60.0 MPa (8700 Psi)  
 Maximum thickness: 50 mm (2 inches)



## Structural and Anchoring Grout (ctnd)

### Target® 1106 Machine Base Grout

- Under heavy machinery which transmits high stress to the grout, including milling machines and printing presses
- Base plates of equipment with dynamic loading
- Column base plates
- General machine base grouting
- Grout resistant to mild or moderate concentrations of many industrial chemicals (available with sulphate-resistant cement)
- Patching or filling blockouts
- Installing anchor bolts or tie rods

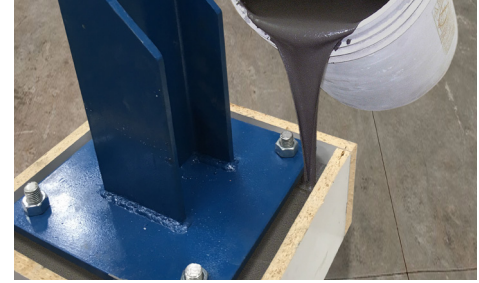
#### Characteristics

Flow: 20 - 50 seconds

Rheological stability: Without bleeding and without segregation

$f'c$  @ 24 hours: 18.6 MPa (2700 Psi) -  $f'c$  @ 28 days: 64.5 MPa (9350 Psi)

Curing: 72 hours



*Included in the list of materials  
approved by the MTQ*

*- General purpose grout and anchoring grout*

## Post-Tensioning Grout

### Target® 1121 Cable Duct Grout

- Vertical and horizontal post-tensioning grout
- Protection of ducts and tension bars
- Optimum filling
- Extended working time
- Fluid phase expansion

#### Characteristics

Flow: 9 - 30 seconds

Rheological stability: Without bleeding and without segregation

$f'c$  @ 28 days: > 84.1 MPa > (12200 Psi)

Maximum thickness: 50 mm (2 inches)



*Included in the list of materials  
approved by the MTQ / MTO*

*- Post-tensioning grout*

## Mortar

### Daubois™ Fortatop Thixotropic Mortar type R

- Structural repair
- Horizontal, vertical and overhead applications (thixotropic)
- Includes microfibers
- Corrosion inhibitor

#### Characteristics

$f'c$  @ 24 hours: 22.0 MPa (3910 Psi) -  $f'c$  @ 28 days: 45.0 MPa (6530 Psi)

Maximum thickness: 50 mm (2 inches) per layer

Curing: 24 hours

Durability: Excellent



*Included in the list of materials  
approved by the MTQ*

*- Type R repair mortar*

### Target® 1177 Traffic Patch® Fine Rapid Setting Fiber-reinforced Mortar

- Structural repairs (bridges, roads, columns, beams)
- Emergency repair - Return to normal service quickly
- Ideal for low temperature

#### Characteristics (TPF)

Slump: 90 - 100 mm

Air content: 4 - 9%

$f'c$  @ 1 hour (after initial set): 14.8 MPa (2150 Psi)

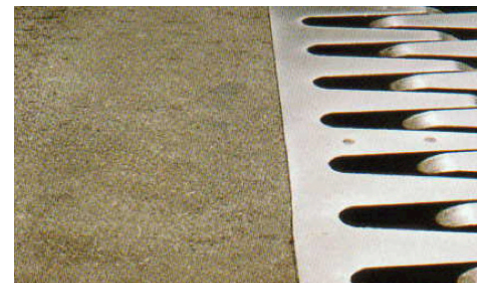
$f'c$  @ 3 hours: 20.7 MPa (3000 Psi) ;  $f'c$  @ 24 hours: 34.5 MPa (5000 Psi)

$f'c$  @ 28 days: 51.7 MPa (7500 Psi)

Minimum thickness: 12 mm (1/2 inch)

Curing: 24 hours (recommended)

Durability: Excellent



## Structural concrete / Repair

### Target® 1124 Flowcrete FS High Fluidity Concrete

- Structural concrete repair
- Horizontal surface leveling
- Little to no external vibration needed

#### Characteristics

Slump: 180 - 220 mm

Air content: 4 - 9%

$f'c$  @ 24 hours: 16.0 MPa (2320 Psi);  $f'c$  @ 28 days: 45.0 MPa (6530 Psi)

Minimum thickness: 25 mm (1 inch)

Curing: 72 hours

Durability: Excellent



*Included in the materials list  
tested by the MTQ  
- Pre-mixed concrete in bags*

### Target® Flowcrete FS SCC Self-Consolidating Concrete

- Concrete structural repair (bridges, tunnels, dams, highways, slabs on ground)
- Meets performance criteria for exposure class C-XL
- Open or closed formwork

#### Characteristics

Slump Flow: 600 - 700 mm

Air content: 5 - 9%

Rheological stability: Without bleeding and without segregation

$f'c$  @ 28 days: 45.0 MPa (6530 Psi)

Minimum thickness: 25 mm (1 inch)

Curing: 72 hours

Durability: Excellent



*Included in the list of materials  
approved by the MTQ  
- Self-consolidating concrete type XIV-S*

### Target® 1179 Traffic Patch® Coarse Rapid Setting Fiber-reinforced Concrete

- Structural repairs (bridges, roads, columns, beams)
- Emergency repair - Return to normal service within 2 hours
- Ideal for low temperature

#### Characteristics (TPC)

Slump: 90 - 100 mm

Air content: 4 - 9%

$f'c$  @ 1 hour (after initial set): 14.8 MPa (2,150 Psi)

$f'c$  @ 3 hours: 20.7 MPa (3000 Psi) ;  $f'c$  @ 24 hours: 34.5 MPa (5000 Psi)

$f'c$  @ 28 days: 51.7 MPa (7500 Psi)

Minimum thickness: 12 mm (1/2 inch)

Curing: 24 hours (recommended)

Durability: Excellent



### Daubois™ Concrete 25 MPa AEA Structural repair concrete

- Contains an air entraining agent.

#### Characteristics

Slump: 50 - 110 mm

Air content: 5 - 9%

$f'c$  @ 7 days: 20 MPa (2900 Psi)

$f'c$  @ 28 days: 25 MPa (3626 Psi)

Minimum thickness: 50 mm (2 inches)

Curing: 3 to 7 days

Durability: Excellent

## Structural concrete / Repair (ctnd)

### Daubois™ Concrete 30 MPa AEA Structural repair concrete

- Contains an air entraining agent.

#### Characteristics

Slump: 50 - 110 mm

Air content: 5 - 9%

$f'c$  @ 7 days : 25 MPa (3626 Psi)

$f'c$  @ 28 days : 30 MPa (4351 Psi)

Minimum thickness: 50 mm (2 inches)

Curing: 3 to 7 days

Durability: Excellent

### Daubois™ Concrete 35 MPa AEA Structural repair concrete

- Contains an air entraining agent.

#### Characteristics

Slump: 50 - 110 mm

Air content: 5 - 9%

$f'c$  @ 7 days : 30 MPa (4351 Psi)

$f'c$  @ 28 days : 35 MPa (5076 Psi)

Minimum thickness: 50 mm (2 inches)

Curing: 3 to 7 days

Durability: Excellent

### Daubois™ Concrete 25 MPa Structural repair concrete

#### Characteristics

Slump: 50 - 110 mm

$f'c$  @ 7 days : 20 MPa (2900 Psi)

$f'c$  @ 28 days : 25 MPa (3626 Psi)

Minimum thickness: 50 mm (2 inches)

Curing: 3 to 7 days

Durability: Excellent

### Daubois™ Concrete 30 MPa Structural repair concrete

#### Characteristics

Slump: 50 - 110 mm

$f'c$  @ 7 days : 25 MPa (3626 Psi)

$f'c$  @ 28 days : 30 MPa (4351 Psi)

Minimum thickness: 50 mm (2 inches)

Curing: 3 to 7 days

Durability: Excellent

### Daubois™ Concrete 35 MPa Structural repair concrete

#### Characteristics

Slump: 50 - 110 mm

$f'c$  @ 7 days : 30 MPa (4351 Psi)

$f'c$  @ 28 days : 35 MPa (5076 Psi)

Minimum thickness: 50 mm (2 inches)

Curing: 3 to 7 days

Durability: Excellent





[www.daubois.com](http://www.daubois.com)

**1 (800) 561-2664**

6155, boul. des Grandes-Prairies, St-Léonard (Qc) H1P 1A5